



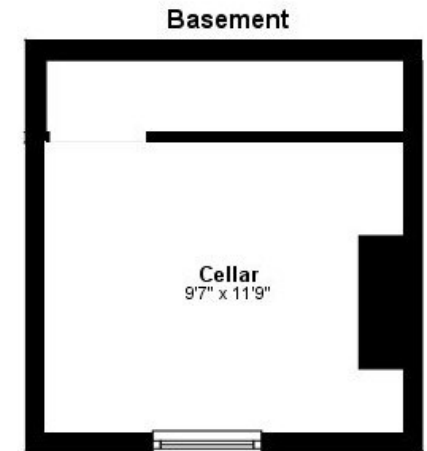
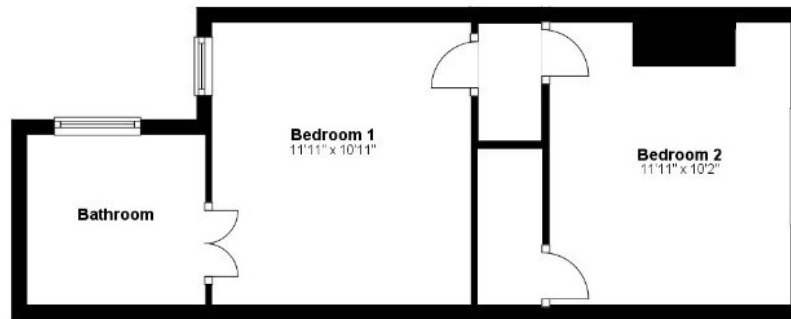
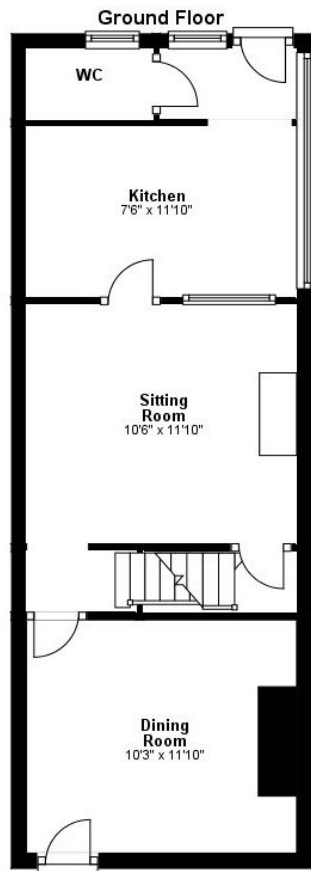
JAMIE WARNER  
— ESTATE AGENTS —



## 32 Primrose Hill, Haverhill, CB9 9LS

Guide Price £230,000

- Two Double Bedrooms
- Garage & Off-Road Parking
- Close To The Town Centre
- Two Reception Rooms
- Front & Rear Gardens
- Double Glazing
- Attractive Fitted Kitchen
- Cellar Conversion
- Gas Radiator Heating



EPC Rating:  
D

Energy Efficiency Rating		
	Current	Potential
<i>Very energy efficient - lower running costs</i>		
(92 plus) <b>A</b>		
(81-91) <b>B</b>		<b>86</b>
(69-80) <b>C</b>		
(55-68) <b>D</b>	<b>67</b>	
(39-54) <b>E</b>		
(21-38) <b>F</b>		
(1-20) <b>G</b>		
<i>Not energy efficient - higher running costs</i>		
<b>England &amp; Wales</b>	EU Directive 2002/91/EC 